



*BWXT • FLUOR • AMENTUM*

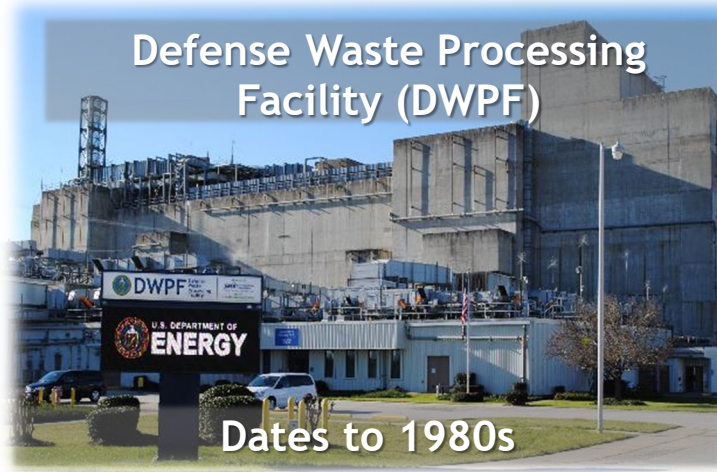
# Liquid Waste Post-Outage Processing Update

**Mike Borders**

**Executive Vice President – Chief Operations Officer**

January 27, 2026

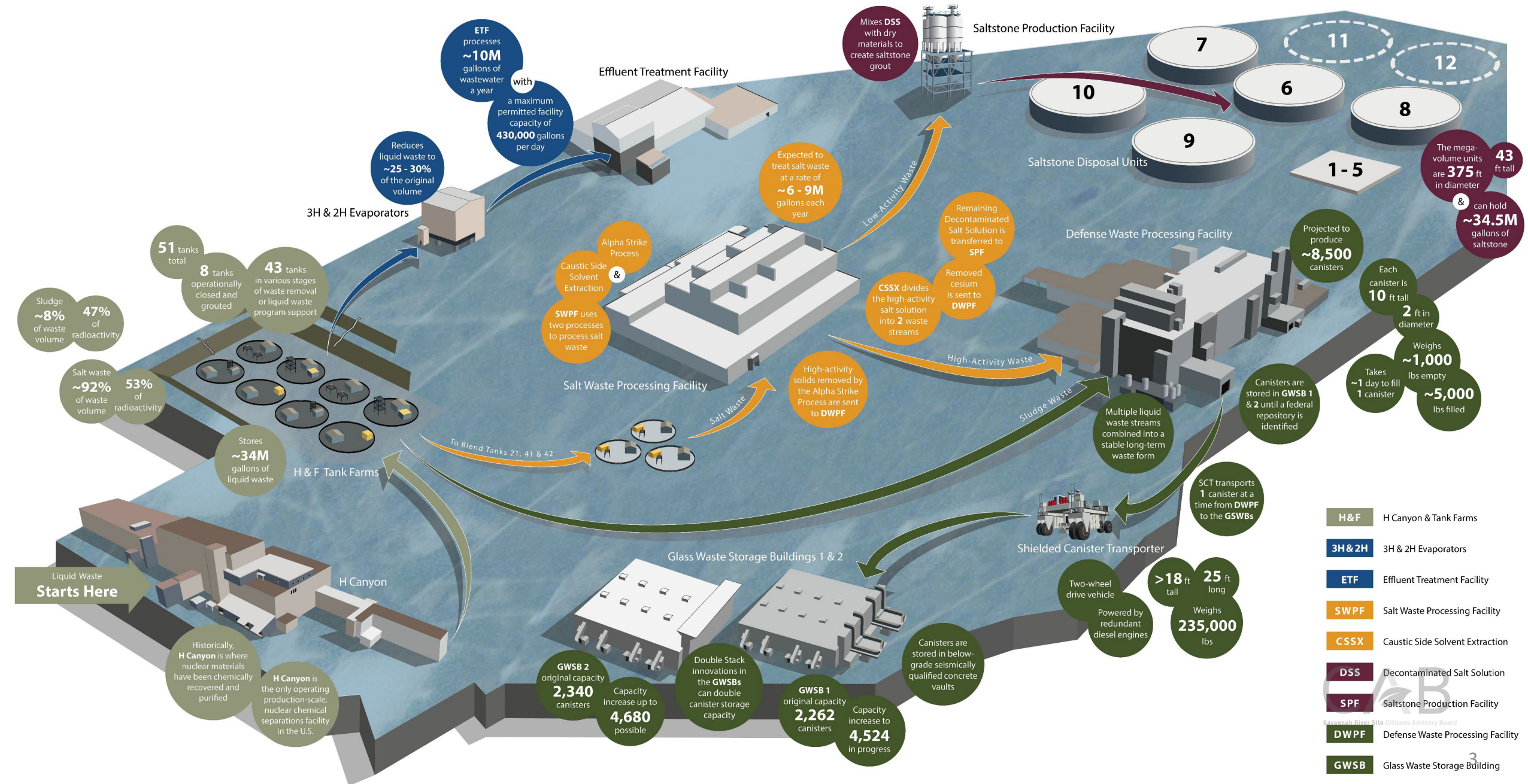
# Liquid Waste (LW) Facilities



- Integrated network of facilities
- Most are aged-facilities > 40 years
- Integrated system availability critical to mission execution
- Successfully completed spring outage and returned all facilities to operation



# SRS Liquid Waste Facilities



# 2025 Outage - Key Work Scopes

- **Facility Throughput**

- *Extended Cross Flow Filters (CFF)*
- *Centrifugal Contactor Replacements*
- *Centrifugal Contactor Vibration Monitoring*

- **Facility Availability**

- *DWPF Main Process Cell (MPC) Crane Upgrades*
- *512-S Lag Storage for SWPF Strip Solution*
- *Strip Effluent (SE) to Slurry Mix Evaporator (SME) modifications in DWPF*

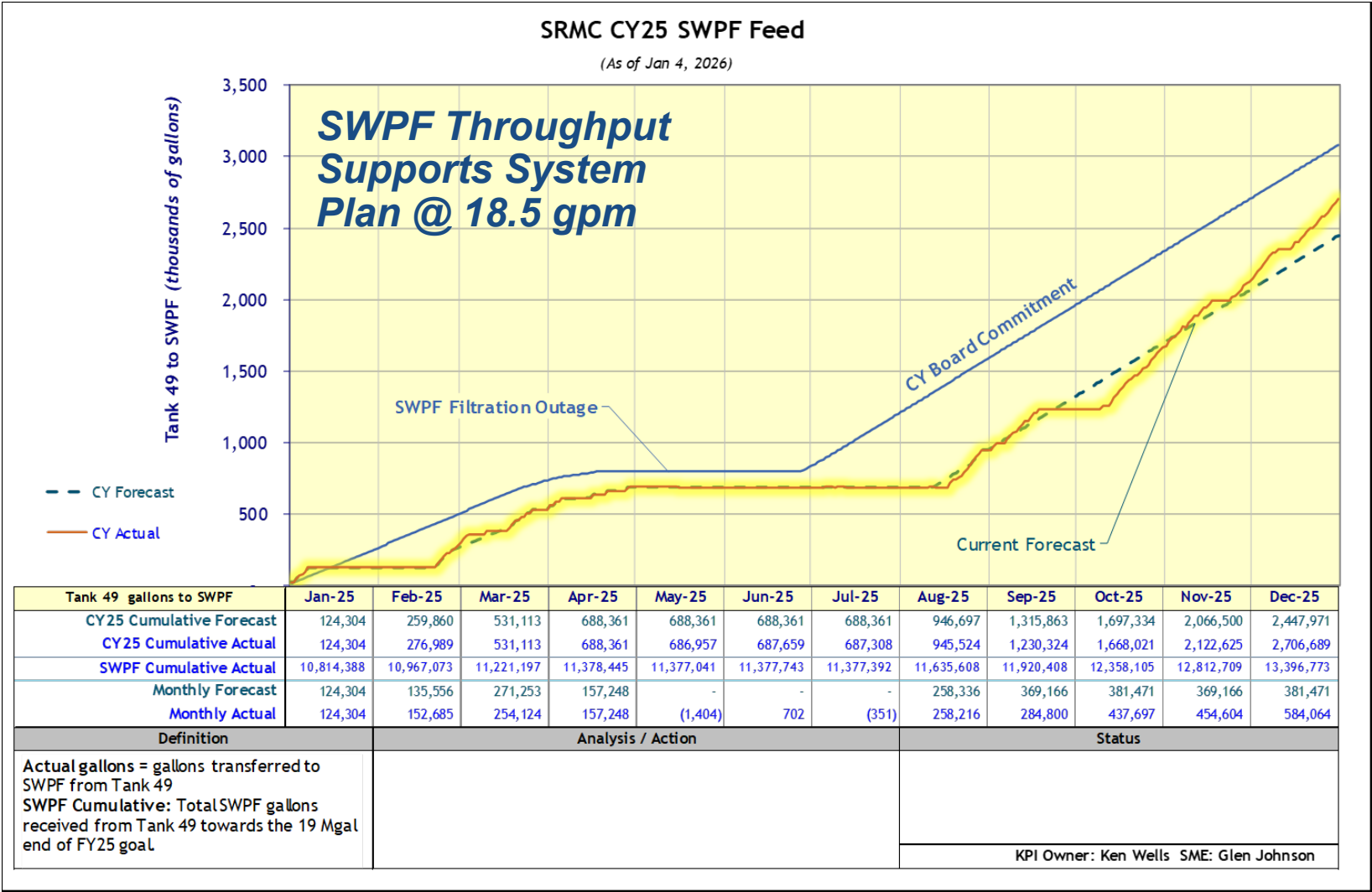


SWPF Centrifugal Contactor



# Operations Performance – Salt Processing

Multiple Processing Records



Records  
7-Day  
30-Day  
60-Day  
90-Day  
Calendar Month

# Crossflow Filter Improvements

- **Goal: Increase SWPF throughput**
- **During the 2025 Spring Outage, larger Crossflow Filter (CFF) tube assemblies were installed in FLT-102A, FLT-102B, and FLT-102C**
  - *Total surface area increase of 97%*
- **Initial operation of filters have shown significant filtration capacity**
- **Previous Filtration**
  - 12-16 gpm
  - Utilizing 3 filters
  - Maximizing Transmembrane Pressure (TMP) (40-80 psid)
- **Current Filtration**
  - 15-25 gpm
  - Utilizing 1 filter
  - Minimal TMP (20-30 psid)

## Mock-Up Photos



Existing 10' Filter



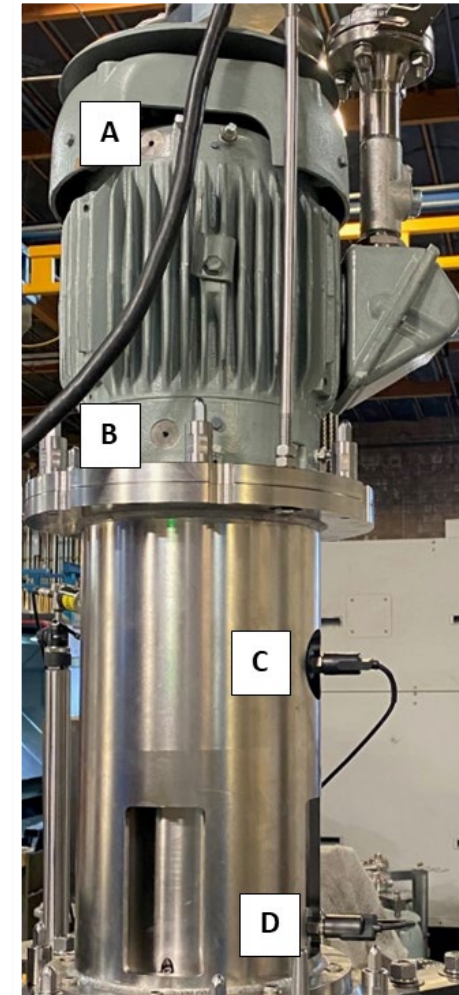
Sleeved Filter Upon Removal



New 16' Filter

# SWPF Centrifugal Contactor Replacements

- Replaced 23 contactors during outage
  - *Included all high-risk mechanical failures & units with solids fouling*
- Upgraded remote monitoring capability for vibration and temperature
- Improve reliability and reduce downtime
- Already shown benefit coming out of outage

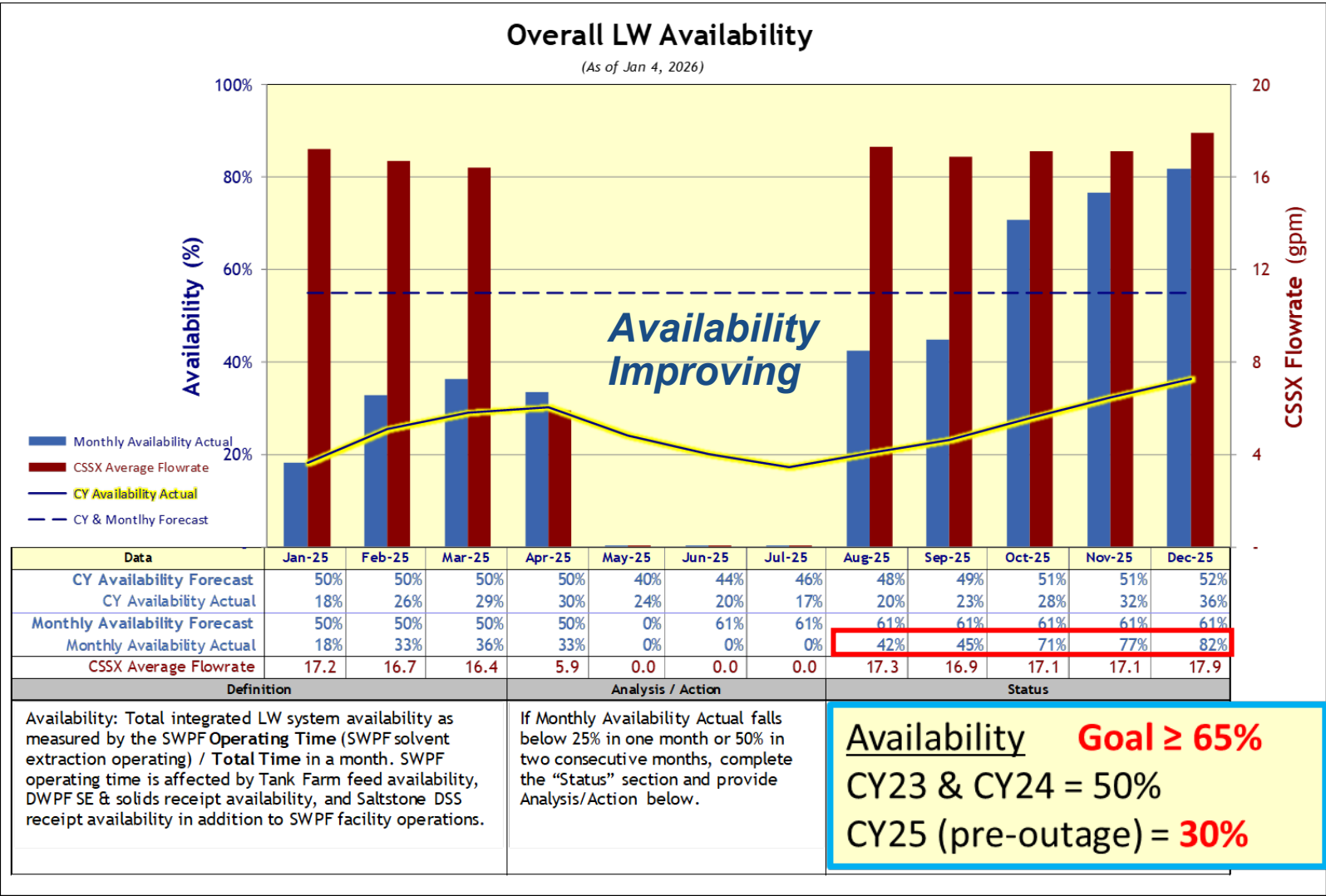


Centrifugal Contactor Monitor Locations

# Operations Performance - Availability

“Drive  
for 65”

65%  
Availability



74%  
Availability  
since 8/18  
post-outage  
restart

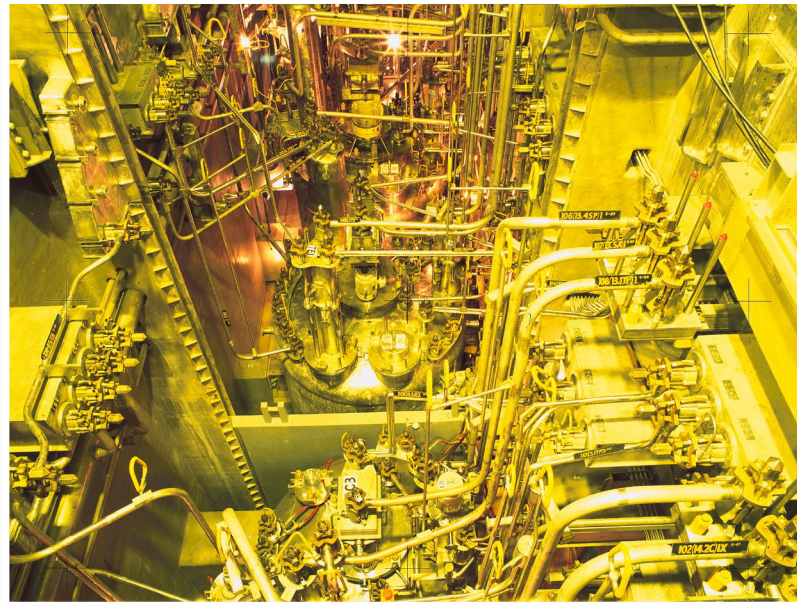
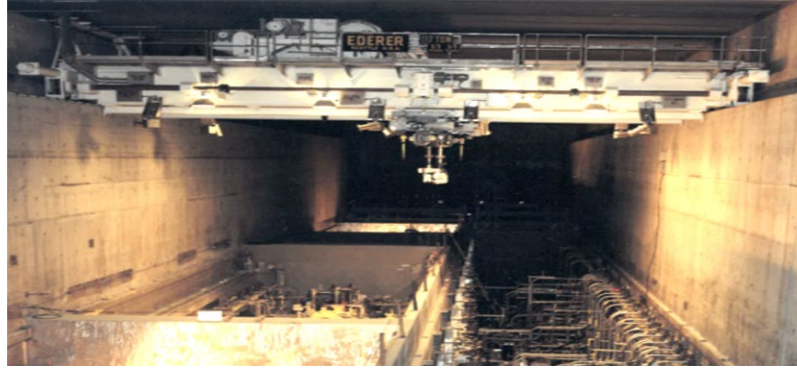




# Defense Waste Processing Facility



New Crane Operating Console

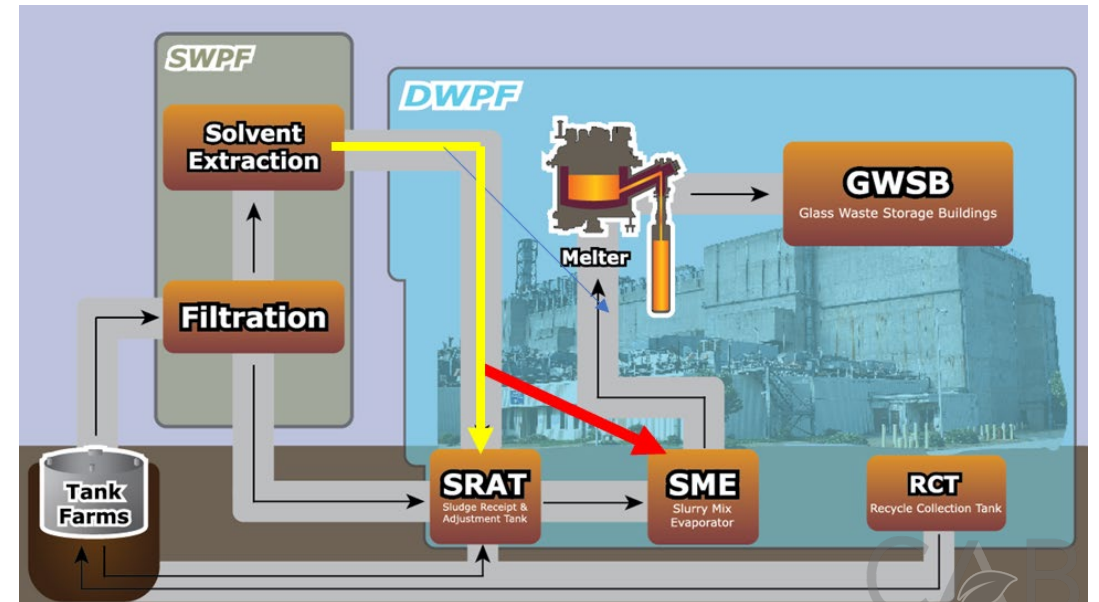
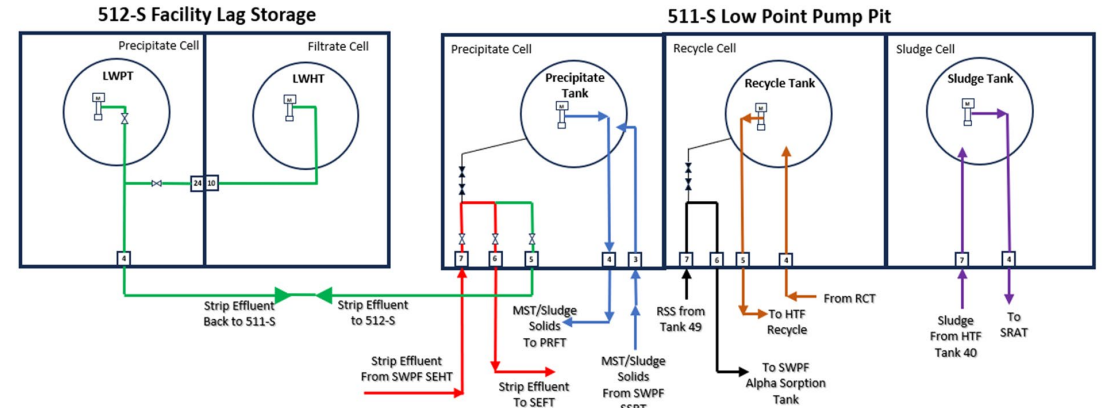


- **Main Process Cell (MPC)**  
Crane controls and camera upgrades performing well
- **MPC Crane** experiencing improved reliability so far
- **Focused on canyon repairs**
  - *Catching up from all the MPC Crane outage time*
- **Focused on canyon clean-up**
  - *Shortens time for future access for repairs*
- **Continued focus on plant reliability upgrades**
- **Resumed melter feed prep and processed 24 cans since outage restart**

# Improved Buffer Between SWPF - DWPF

- Lag storage for strip effluent (SE) at 512-S
- 512-S provides ~10 days of buffer to accommodate short-term outages at DWPF without pausing SWPF operations
- SE to SME improves operational flexibility in DWPF by providing a redundant disposition path for SE
- Allows for “Sprint Capability” to catch up when DWPF downtimes/outage creates a backlog of SE from SWPF

**Lag storage has been used once post-outage**





# Saltstone Production Facility

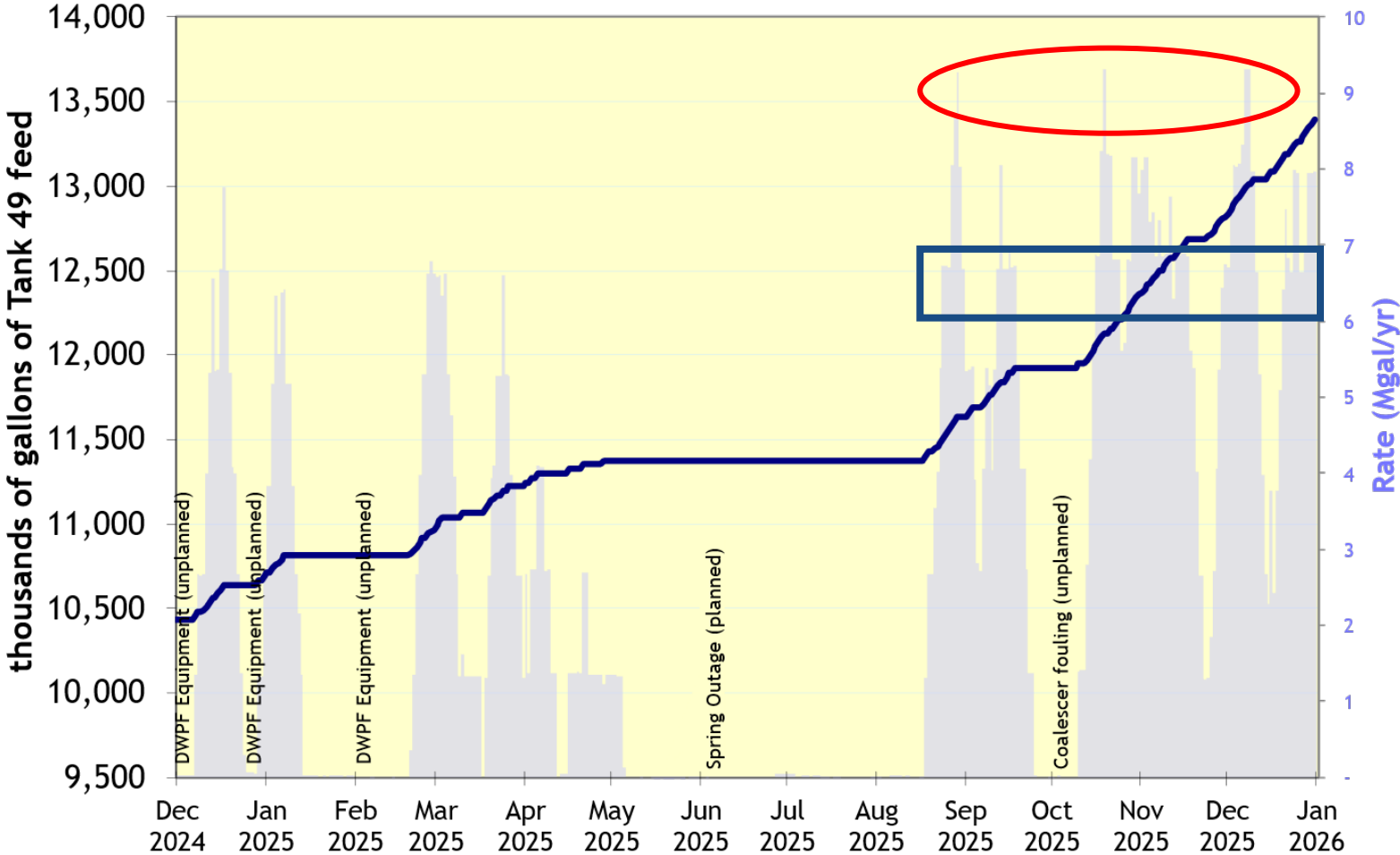


Saltstone Production Facility (SPF)

- Resumed processing post outage on August 15
- Saltstone processed 2.37M gallons of SWPF Decontaminated Salt Solution (DSS) materials since spring outage

# Processing Delivering Results

## SWPF Production



**~9.5 Mgal  
rate**

**Average 6.0 –  
6.7 Mgal/yr  
needed for  
mission**

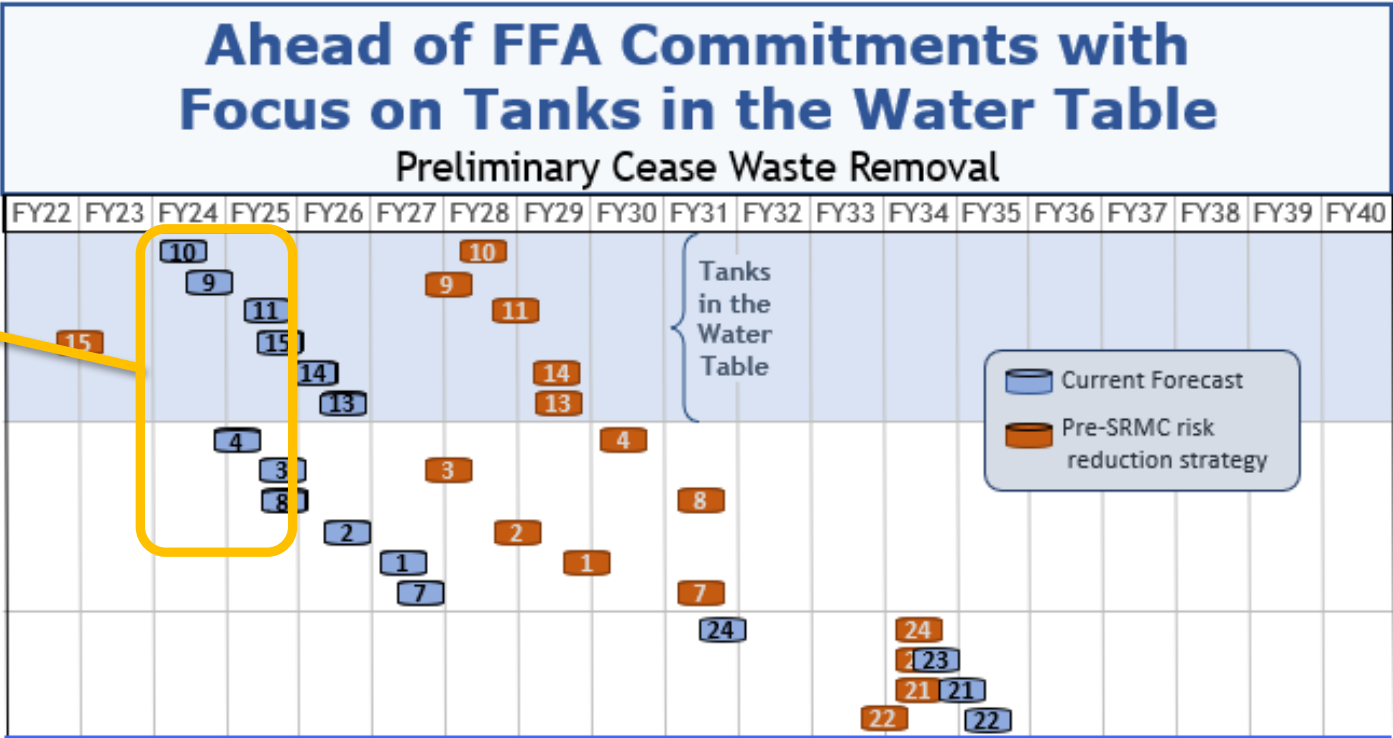


# Processing Delivering Results

FFA Milestone Summary

| Calendar Year | Preliminary Cease Waste Removal<br>(# of Tanks) | Operational Closure<br>(# of Tanks) |
|---------------|---|-------------------------------------|
| 2023          | 0   | 0                                   |
| 2024          | Complete 1                                      | 0                                   |
| 2025          | Complete 3                                      | 0                                   |
| 2026          | Complete 2                                      | 0                                   |
| 2027          | 1 of 2 Complete 2                               | 0                                   |
| 2028          | 0   | 3                                   |
| 2029          | 2   | 0                                   |
| 2030          | 1   | 2                                   |
| 2031          | 0   | 3                                   |
| 2032          | 0   | 1                                   |
| 2033          | 0   | 2                                   |
| 2034          | 1   | 0                                   |
| 2035          | 1   | 0                                   |
| 2036          | 1   | 1                                   |
| 2037          | 2   | 4                                   |
| Total         | 16  | 16                                  |

Waste Removal & Tank Closure Task Order Plan

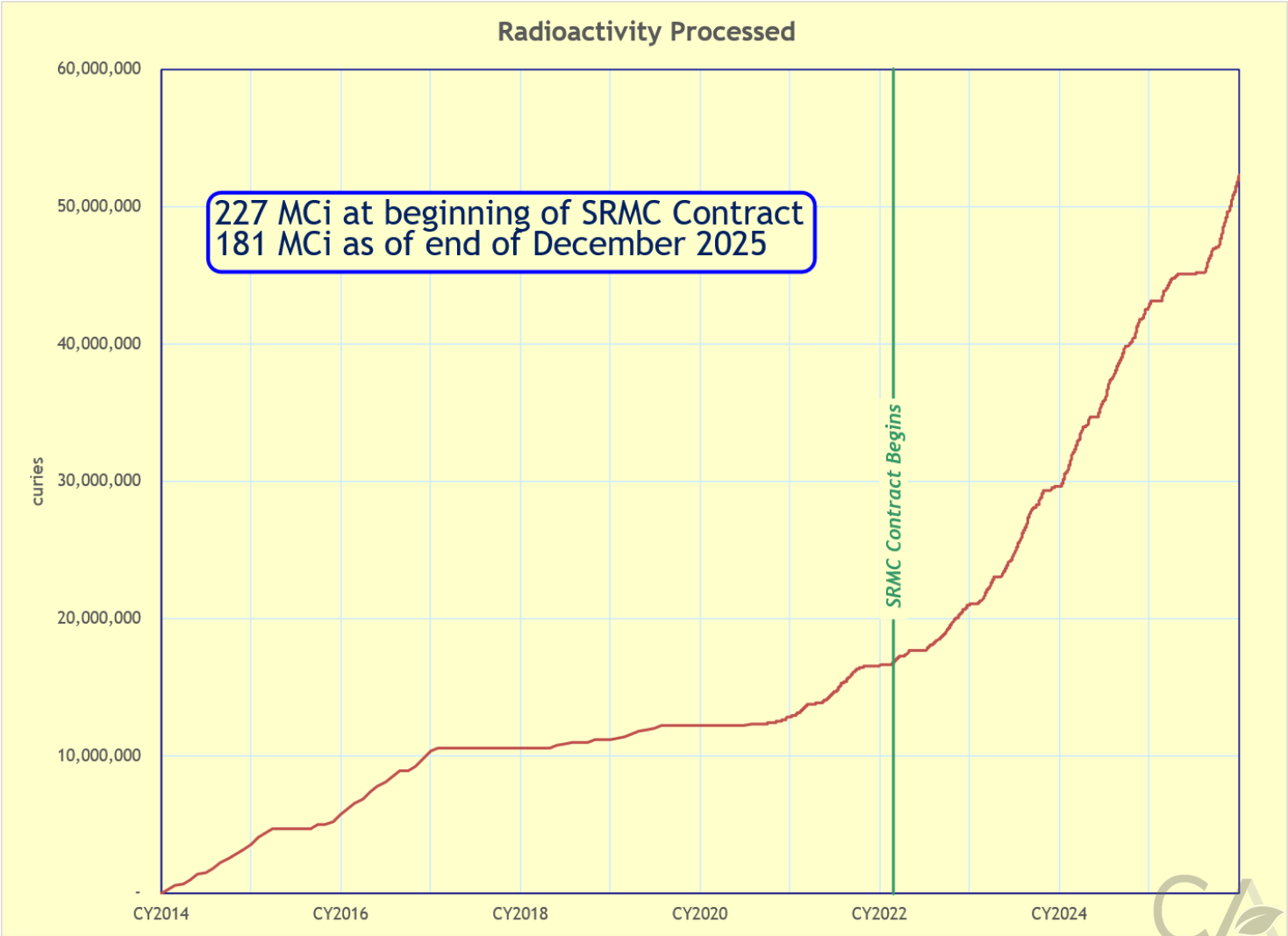


- PCWR achieved on Tank 3 in September
- 4 total achieved in 2025
- 7 total achieved since start of contract

# Processing Delivering Risk Reduction

46 Million Curies  
reduced since  
start of SRMC  
contract

| Since SRMC contract start | Number | Units     |
|---------------------------|--------|-----------|
| Cans Poured               | 202    | Canisters |
| Sludge Processed          | 307 K  | Gallons   |
| SWPF Processed            | 10.9 M | Gallons   |
| Saltstone Processed       | 15.5 M | Gallons   |
| Saltstone Grout Made      | 28.5 M | Gallons   |
| Curies Processed          | 35.5 M | Curies    |





# Summary

- Post-outage processing in all facilities has been going well
- Early indications of outage impact are very positive
  - *Production records being set*
- LW system capacity capable of satisfying the mission need
  - *Primary focus on increasing system availability with particular focus on DWPF*

